



CONNECTING KOCHI TO THE BUSINESS WORLD

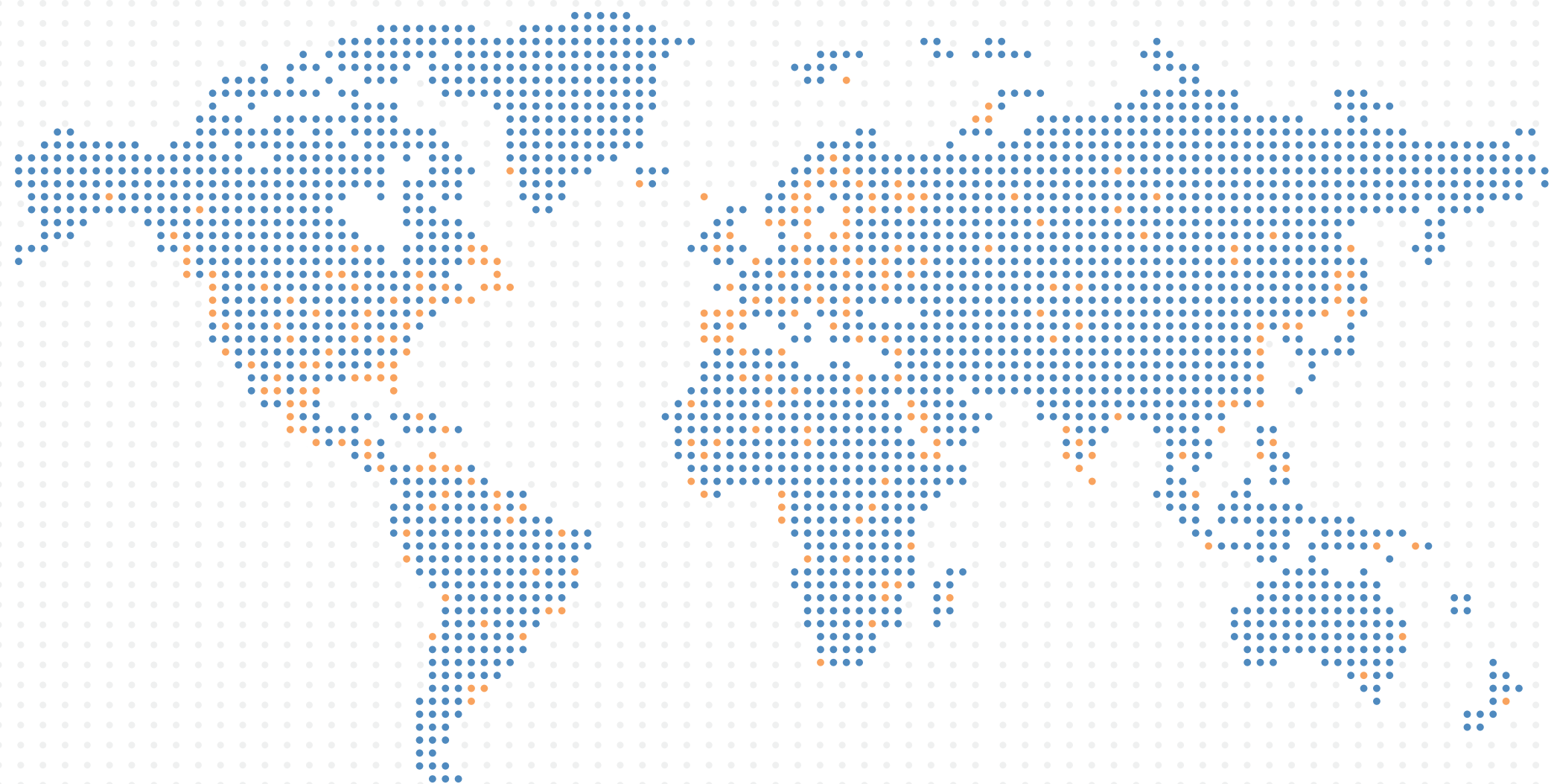


WORLD TRADE CENTER™
KOCHI
AT INFOPARK

World's most sought after business address
brought to you by Brigade Group

Facilitated by Mather Projects Private Limited

WELCOME TO A WHOLE NEW WORLD OF BUSINESS OPPORTUNITIES



WORLD TRADE CENTERS ASSOCIATION

Founded in 1968, the World Trade Centers Association (WTCA) headquartered in New York comprises of about 334 World Trade Centers spread across 98 countries.

Over 1 million international organisations are associated with these WTCs. Behind these raw figures stands the simple idea that now spans the globe: for large, medium or even small-sized enterprises that are seeking opportunities of extending their activities around the world.

The WTCA has created an international trading network that opens up new economic spheres and sales territories. Business relationships are based on peaceful cooperation and ensures cultural exchange and mutual understanding between different regions.

The WTCA embraces the motto, Peace and Stability through Trade.



WORLD TRADE CENTER™
KOCHI
AT INFOPARK

KEY ADVANTAGES

Brand WTC - The high-profile WTC name, along with typically high-image events and large volumes of people who visit the WTCs, provides implicit value to tenants.

Concentration of Services - The WTCs consolidate international trade agencies and private sector firms involved in global trade and commerce, providing a single point access.

Redevelopment Impact - Because of the scale of activity or Government sponsorship, WTCs in most cases dramatically upgrade local real estate patterns.

Economic Impact - With conference and exhibition facilities, WTCs attract substantial out-of-town visitors, producing a positive impact for their communities.



KOCHI'S FINEST BUSINESS ADDRESS

The WTC creates a 'critical mass' of international business expertise that attracts leading organisations to it and stimulates economic growth throughout the community, by bringing together the following factors in a single space:

- International businesses
- International trade service providers

The prime mission of a WTC is to support the World Trade objectives of the region it serves.

World Trade Center Kochi is the newest member of the World Trade Centers Association. World Trade Center Kochi is being developed with a single-minded mission to provide international opportunities to both Kochi & Kerala and foster business development in the IT/ITes sector.



KOCHI - THE NEXT BIG BUSINESS DESTINATION IN SOUTH INDIA

Kochi has established itself as one of the most promising business destinations in the south west coast of the country. The major industrial sectors are Tourism, Ship-building, Oil refining, Rubber, Spices and Marine Exports. The International Pepper Exchange which handles global trade of pepper has its headquarters in Kochi.

The International Container Trans-shipment Terminal (ICTT) also known as Vallarpadam Terminal in Kochi is a first and one of its kind in India.



INFOPARK KOCHI

Infopark, located in Kochi was launched in 2004. It was developed by the Government of Kerala to promote growth in the IT sector. Infopark comes under the ownership of Infoparks Kerala, an independent body which is fully owned by the Government of Kerala. Infopark campus is segregated into the Special Economic Zone (SEZ) and Non-Special Economic Zone. There are about 81 SEZ units of Infopark which include companies like Cognizant, KPMG, Petrolink, TCS, Wipro, Xerox and Visual IQ to name a few. Its intent is to become one of the major IT parks in the country.

GIVE YOUR BUSINESS
THE GLOBAL EDGE



South India's Leading
Commercial Developer
Proudly Presents



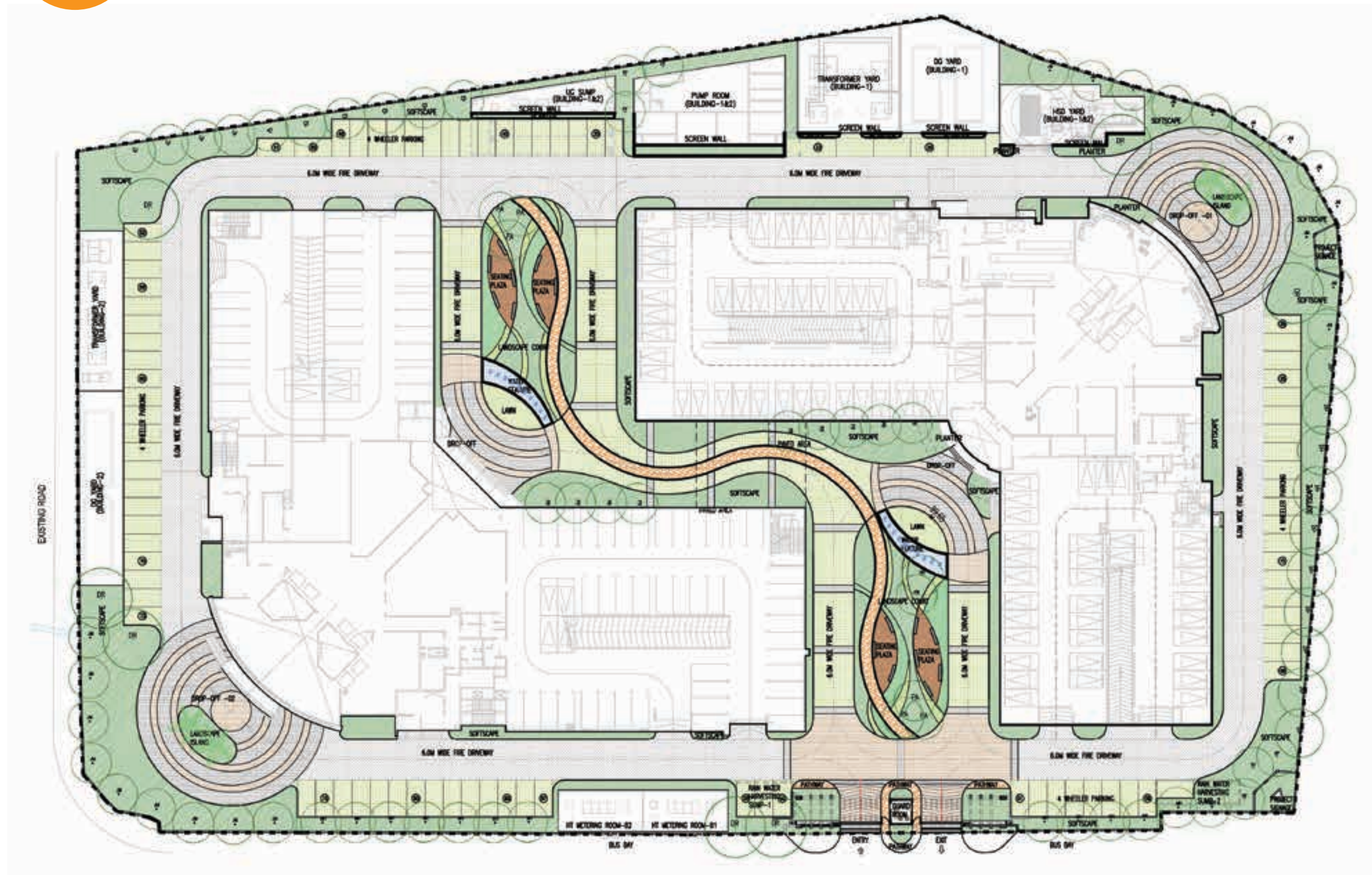
WORLD TRADE CENTER™
KOCHI
AT INFOPARK



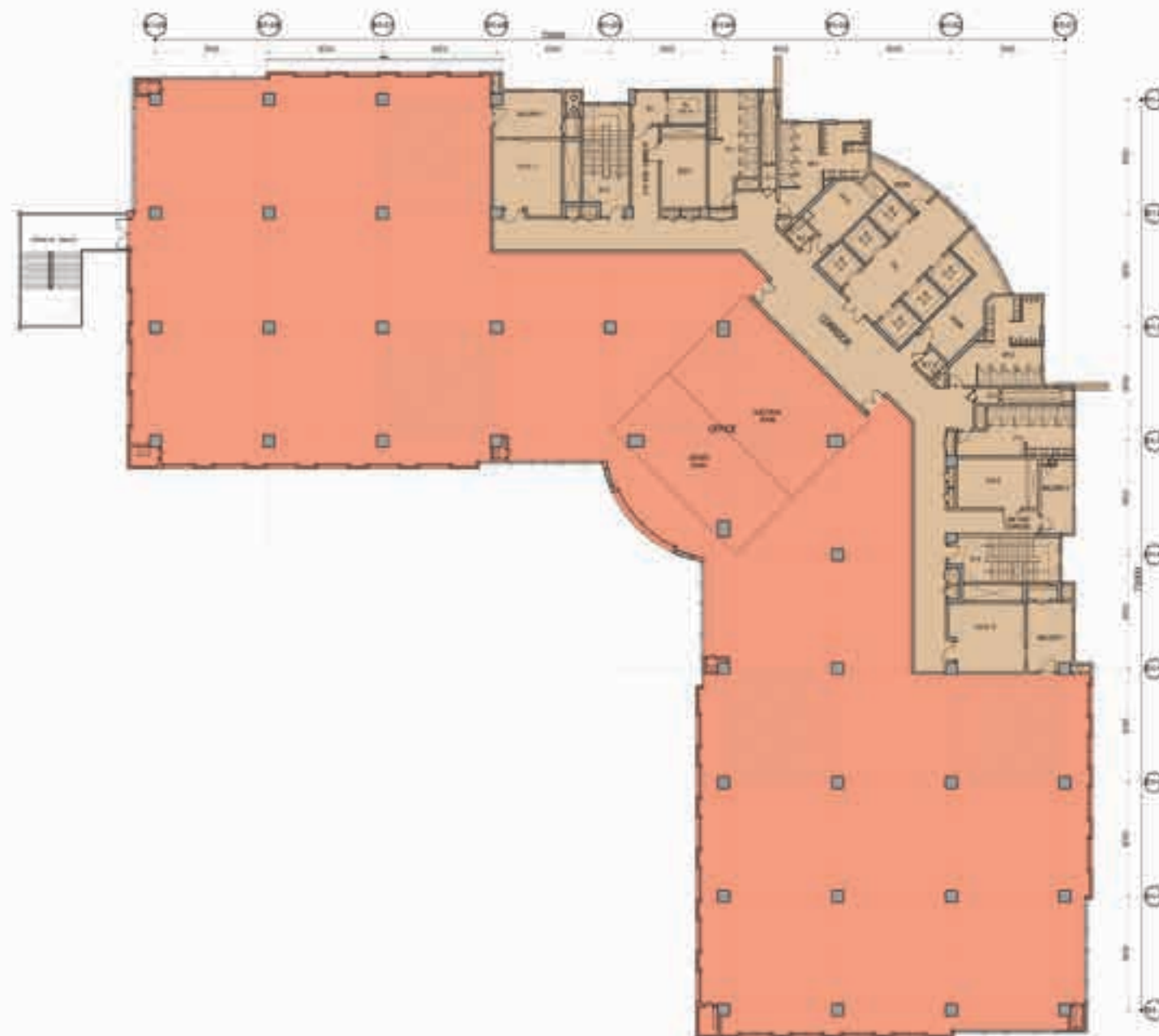
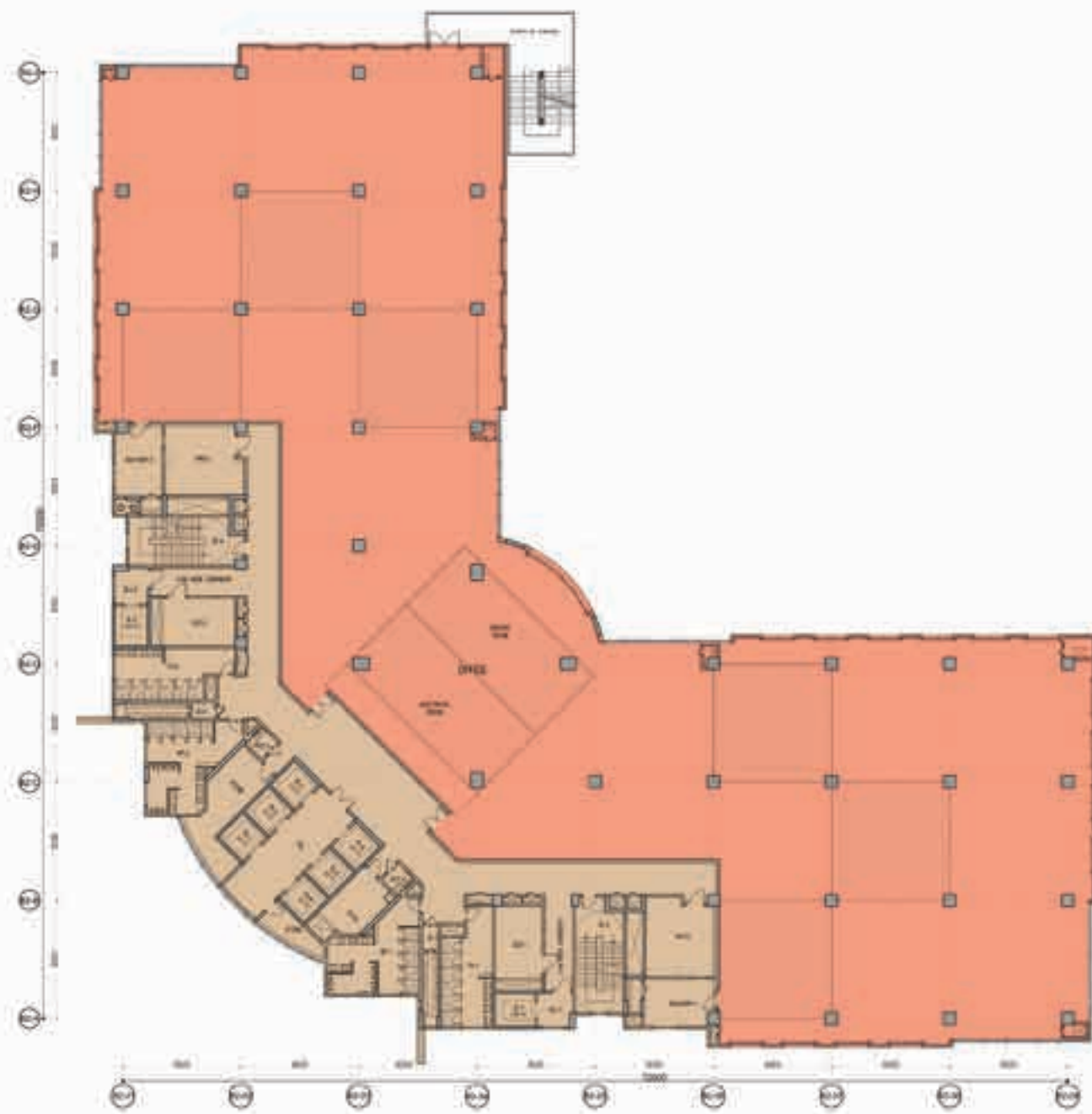


Entrance Lobby at
World Trade Center Kochi

MASTER PLAN



SINGLE TENANT
FLOOR PLAN



MULTI-TENANT
FLOOR PLAN





World Trade Center Kochi

SPECIFICATIONS AND AMENITIES

Technical Details

- Pre-certified LEED GOLD for Core & Shell
- 11 level RCC structure, Ground + 10 floors + Terrace
- Designed by renowned Architects - RSP
- 71,535 sq.m. (7.7 lakh sq.ft.) Grade A SEZ office space development in 2 Towers (Tower A & Tower B)
- Tower A development of 35,767 sq.m. (3.85 lakhs sq.ft.) with floor plate of around 3,995 sq.m. (43,000 sq.ft.)
- Flexible offices offering both small and larger office spaces
- Well-appointed double height reception lobby
- Ample planned parking

Structural Design and Ambience

- Wide column design providing optimal utilisation of space
- External glass facades with low e-value
- Screed finish flooring
- Landscaping

Power

- Separate transformers provisioned for each Tower
- 100% power back-up for office as well as common area and parking

Air-conditioning

- Centralised air-conditioning through water cooled chillers
- High side AC provided for 1TR/350 sq.ft.

Elevators

- 6 high speed passenger elevators of 20 pax each
- Service lift of 1,350 kg capacity

Water & Sewerage Treatment Plant

- Zero discharge design
- Separate underground sump & overhead tanks are provided for domestic as well as fire requirements
- Rain water harvesting
- 130 KLD advanced sewerage treatment plant

Safety & Security Systems

- Designed as per NBC norms
- Base building smoke detectors, fire sprinklers and hose reels in common areas

Telecom Connectivity

- Right of way provided for service providers

1 sq.m. = 10.764 sq.ft.

Key Occupants: KPMG, Xerox, Visual IQ, Forerun Technologies, Theory Y, EXL and Geojit Technologies among others.

SOME OF OUR LARGE OFFICE SPACE DEVELOPMENTS IN BENGALURU



SUMMIT
@
BRIGADE
METROPOLIS

AN EXCELLENT BUSINESS ADDRESS

Located in the heart of the IT capital, Whitefield, Summit @ Brigade Metropolis offers an enviable advantage.

It is within the green and professionally managed 36-acre Brigade Metropolis integrated enclave.

The enclave has three separate and distinct zones for commercial, retail and residential activities. Summit @ Brigade Metropolis provides an exclusive swimming pool for the occupants. Working at Summit and being part of the Brigade Metropolis is truly an enriching and satisfying experience.

- Total development: 83,148 sq.m. (8,95,000 sq.ft.)
- Grade A specifications

Key Occupants: Capgemini, Honeywell, General Electric, Ernst & Young, eClinicalWorks and State Street Corporation among others.

AN ENVIABLE BUSINESS ADDRESS

Just 2 km from Outer Ring Road (ORR) and 12 km from M.G. Road, located in Whitefield, Nalapad Brigade Centre offers an enviable advantage. It is adjacent to the green and professionally managed 36-acre Brigade Metropolis integrated enclave.

- Total development: 50,167 sq.m. (5,40,000 sq.ft.)
- Grade A specifications

Key Occupants: CGI Group, eClinicalWorks and Mentor Graphics among others.

**NALAPAD
BRIGADE
CENTRE**



BRIGADE
BHUWALKA
ICON
WHITEFIELD



A LANDMARK BUSINESS ADDRESS IN THE HEART OF THE IT HUB

Adjacent to ITPB (International TechPark Bengaluru) and Brigade TechPark on Whitefield Main Road, Brigade Bhuwalka Icon is an ideal business address for multinational companies.

It boasts of a majestic double height lift lobby, ample parking and other amenities. Its good frontage with great visibility makes it a perfect office location.

- Total development: 34,838 sq.m. (3,75,000 sq.ft.)
- Grade A specification

Key Occupants: A Multinational IT Service Provider.

BRIGADE
MAGNUM
HEBBAL - BANGALORE



THE PERFECT OFFICE IN NORTH BENGALURU

Every important business consideration comes together in the thriving business hub of North Bengaluru, located in the bustling corridor to The International Airport.

This 4-acre campus is designed to be a sustainable & efficient working environment and is already home to some of the leading Fortune 500 companies.

An integrated system of cafes and shared amenities at the lobby level makes Brigade Magnum a dynamic modern urban centre. With huge open space, the extensive landscaped space provides vistas and a variety of gathering spaces cooled by water features, shade trees and softscape. It is designed to improve productivity by encouraging informal gatherings and dynamic interaction.

- Total development: 50,167 sq.m. (5,40,000 sq.ft.)
- Grade A specifications

Key Occupants: Coca Cola, Alcatel Lucent, ABB and KWE India among others.

BRIGADE
TECHPARK
WHITEFIELD - BANGALORE

HOME TO GLOBAL GIANTS

Built to international standards, Brigade TechPark offers a range of comprehensive features and facilities. This spacious technology park is spread across two buildings, strategically located next to ITPB and the Export Processing Zone.

A state-of-the-art building, Brigade TechPark offers a well-planned and sensitive working environment, equipped with an exclusive pool, gym and landscaped gardens.

- Total development: 41,342 sq.m. (4,45,000 sq.ft.)
- Grade A specifications

Key Occupants: Standard Chartered Bank, Idea Cellular and Incadea among others.



1 sq.m. = 10,764 sq.ft.

OFFICE SPACE INVESTMENTS IN A WORLD-CLASS ENCLAVE

Strategically located in the corridor connecting the IT Hub of Whitefield and the International Airport, central business districts and Hoskote Automobile Hub. Part of a world-class integrated development (Brigade Golden Triangle) consisting of luxury apartments, clubhouse, a proposed mall and an International Hotel.

From spacious corridors to landscapes that hosts a huge gathering space interlaced with the inside lobby to complete the office urbanity. Ample parking space to sufficient ventilation. An outdoor amphitheatre to a helipad. It's not just a tower, it's a perfect business address on Old Madras Road.

- Total development: 56,670 sq.m. (6,10,000 sq.ft.) in 2 blocks
- Grade A specifications

Signature Towers
at Brigade Golden Triangle





WTC BENGALURU ONE OF ITS KIND

The objective of World Trade Center Bengaluru is to foster International Trade by providing various services and facilities designed specifically to meet the needs of participants in global commerce. World Trade Center (WTC) Bengaluru is Certified as a 'Center of Excellence' by WTCA, New York.

WTC Bengaluru is located in a 40-acre integrated lifestyle enclave encompassing the WTC Tower, Orion Shopping Mall, the 5-Star Sheraton Grand Hotel & Multi-specialty Columbia Asia Hospital, Premium Residences and The Brigade School. The infrastructure available is designed to meet all the requirements of visiting business individuals & delegations within a single location.

- Total development: 1,02,192 sq.m. (11,00,000 sq.ft.)

- Grade A specifications

Key Occupants: Amazon, KPMG, Samsung, Siemens, ABB, Canadian Consulate, Rakuten, H&M, Bank of Tokyo and Toyota among others.



An award-winning brand, Brigade Group has developed integrated enclaves, villas, premium residences, luxury apartments, office buildings, SEZs, software parks, malls, clubs, spas, hotels and serviced residences.

Global Real Estate Brand Awards 2016



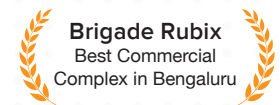
Brigade Group
Commercial developer of the year
(Brigade Magnum)

7th Realty Plus Excellence Awards (South) 2015



Brigade Group
Commercial developer of the year
(Brigade IRV Centre)

CREDAI Real Estate Awards 2015



Brigade Rubix
Best Commercial Complex in Bengaluru

6th Realty Plus Excellence Awards 2014

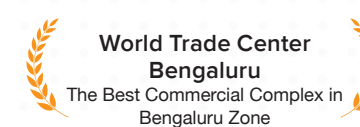


World Trade Center Bengaluru @ Brigade
Commercial property of the Year



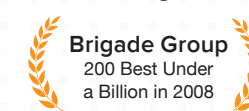
Brigade Group
Commercial Developer of the year
(Brigade Magnum)

CREDAI Real Estate Awards 2013



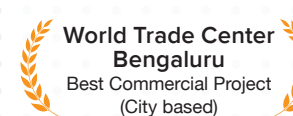
World Trade Center Bengaluru
The Best Commercial Complex in Bengaluru Zone

Asia Pacific Region - Forbes



Brigade Group
200 Best Under a Billion in 2008

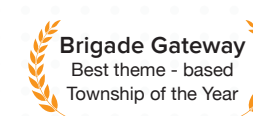
CNBC AWAAZ Real Estate Awards 2012



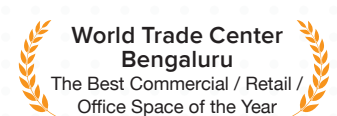
World Trade Center Bengaluru
Best Commercial Project (City based)



Orion Mall
Best Retail (City based)



Brigade Gateway
Best theme - based Township of the Year



World Trade Center Bengaluru
The Best Commercial / Retail / Office Space of the Year

CREDAI Real Estate Awards 2012

Realty Plus Excellence

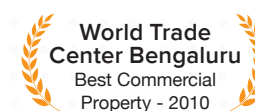


Brigade Group
2011 & 2012 Best Commercial Developer (South India)



Brigade Gateway
2012 Integrated Township of the Year (South India)

Property World



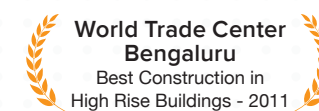
World Trade Center Bengaluru
Best Commercial Property - 2010

ET Asia Retail Congress 2012



Orion Mall
Winner of 4 awards

ACCE-BILLIMORIA Award



World Trade Center Bengaluru
Best Construction in High Rise Buildings - 2011

Platinum Awards of Excellence by Construction World in 2012

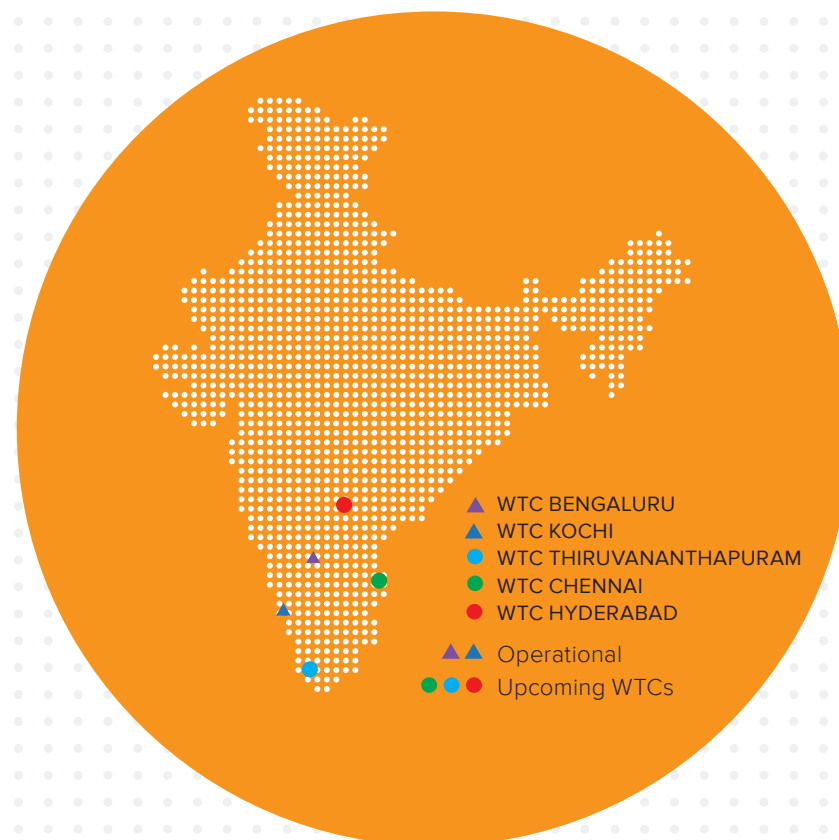


Brigade Group
India's Top Ten Builders for 5 consecutive years (2007-2011)

and many more...

PROMOTERS OF WORLD TRADE CENTER BENGALURU AND KOCHI

LICENSE HOLDERS OF WORLD TRADE CENTER
CHENNAI, HYDERABAD AND THIRUVANANTHAPURAM





Facilitated By Mather Projects Private Limited

Regional office:
World Trade Center Kochi
InfoPark Special Economic Zone
Kusumagiri Post, Kochi
Kerala - 682030

Corporate Office:
Brigade Enterprises Limited
29th & 30th Floor, World Trade Center,
Brigade Gateway Campus, 26/1, Dr. Rajkumar Road
Malleswaram - Rajajinagar, Bangalore
Karnataka - 560 055 Ph: 080-41379200

For space enquiries: Mr. Jijo V J: +91 80890 99901 | Toll Free: 1800 102 9977
commercial@brigadegroup.com | BrigadeGroup.com

*Disclaimer: The information herein i.e., specifications, designs, dimensions, etc., are subject to change without notification as may be required by the relevant authorities or the developer's architect, and cannot form part of an offer or contract. Whilst every care is taken in providing this information, the owner, the developer and the managers cannot be held liable for variations. All illustrations and pictures are artists' impressions only. The items are subject to variations, modifications and substitutions as may be recommended by the company's architect and/or the relevant approving authorities. E & OE.